

---

*The measure of a society  
is its reverence for children.*

*-Dr. Arnold Gesell*

---

## Our Foundation

Gesell Institute of Human Development is a New Haven based non-profit that has been associated with understanding how children grow and learn since 1950. Gesell programs and publications help parents and educators understand the ages and stages of childhood.

Understanding the stages of child growth and development and using this knowledge to interpret behaviors, to plan appropriate curricula, and to manage the classroom is essential to quality teaching practices. Gesell workshops link the continuum of growth to the use of an effective screening tool, the Gesell Developmental Observation.

## Our Mission

To educate, guide, and support parents and educators in understanding child growth and development so that all children may be nurtured, encouraged, and empowered as they grow and learn.

## Our Vision

That all children have the time and opportunity to learn and grow at their own pace and in their own way.



---

## Advisory Council

*William Crain, PhD*

Professor of Psychology, The City College of New York

*Stanley Finkle*

Director, Elementary Education & Languages  
North Syracuse Central School District

*Joe Frost, EdD, LHD*

Parker Centennial Professor, *Emeritus*, University of Texas

*Walter Gilliam, PhD*

Assistant Professor, Yale Child Study Center  
Director, The Edward Zigler Center

*Jim Grant*

Executive Director, Staff Development for Educators

*Carla Horwitz, PhD*

Director, Calvin Hill Day Care Center &  
Kitty Lustman-Findling Kindergarten

*Sharon Lynn Kagan, PhD*

Associate Dean for Policy, Teachers College, Columbia University

*Ming Li, MD*

Professor, Child Neuro-habilitation Clinic  
The First Hospital of Peking University

*Sandra Malnquist*

Director, Creating Kids, Creating Curriculum  
Connecticut Children's Museum

*Tina Mannarino, PhD*

Early Childhood Education Supervisor, New Haven Public Schools

*Linda Mayes, MD*

Arnold Gesell Prof. of Child Psychiatry, Pediatrics, & Psychology  
Yale Child Study Center

*Rae Pica*

Director, Moving & Learning

*Dorothy Singer, PhD*

Senior Research Associate, Yale Child Study Center  
Co-Director, Family Television Research and Consultation Center

*Jerome Singer, PhD*

Professor of Psychology, *Emeritus*, Yale Child Study Center  
Co-Director, Family Television Research and Consultation Center

*Fred Volkmar, MD*

Director, Yale Child Study Center

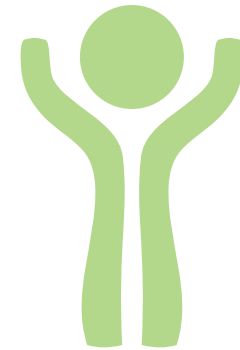
*Miriam Westheimer, EdD*

Director, Home Instruction for Parents of Preschool Youngsters  
(HIPPI) International

---

---

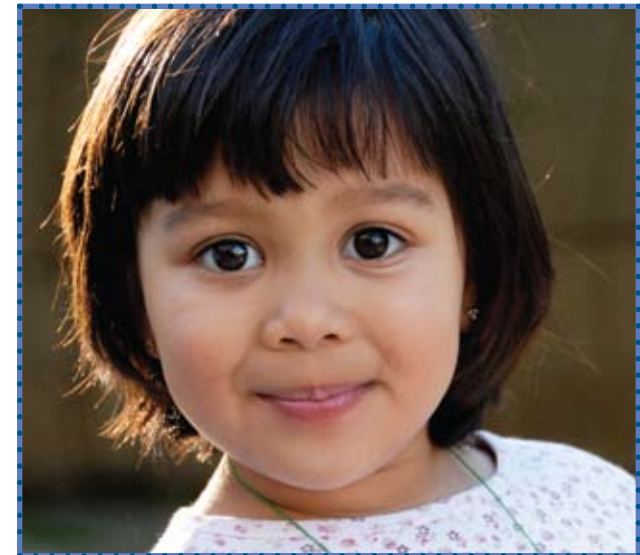
GESELL INSTITUTE



---

*Helping Children Succeed Since 1950*

---



---

**Gesell Institute of Human Development**  
310 Prospect Street, New Haven, CT 06511

[www.gesellinstitute.org](http://www.gesellinstitute.org)

E-mail: [info@gesellinstitute.org](mailto:info@gesellinstitute.org)

Phone: 203-777-3481 Fax: 203-776-5001

Toll-free: 800-369-7709

---

---

## Our Services and Products

Our programs cover topics such as child behavior, school readiness, parent-teacher communication, kindergarten transition, and developmentally appropriate classrooms. Our services include:

- Teacher Training
- Parent Seminars
- Administrator Workshops
- Credit-Bearing College Courses
- Professional Consultation

Along with *Gesell Developmental Observation* materials, our classic parenting books (the series *Your One-Year-Old* through *Your Ten to Fourteen-Year Old*, *Child Behavior*, and more) continue to be in high demand throughout the country. Also available are updated informational booklets and parenting pamphlets; a web-based radio program for parents and professionals; and a DVD, *Ready for Kindergarten*, featuring interview footage with nationally recognized early childhood experts, parents, and master teachers.



*We provide multiple sources of information for parents, teachers, and schools to assist them in making important decisions about children. We do not set policy or provide recommendations surrounding issues of retention, placement, or readiness “scores” in association with the Gesell Developmental Observation.*

---

---

## Our Board of Directors

*Linda Calarco, MA (President)*  
Former teacher and guidance counselor  
New York City Public Schools

*Judy August, MS, CAS (Vice President)*  
School Psychologist, retired  
Cheshire Public Schools

*Barbara Stern, MS, MBA (Secretary)*  
Principal  
Darcey School

*William Bakke, JD, LL.M (Treasurer)*  
Chief Financial Officer, retired  
Hopkins School

*John Cirello, JD*  
Attorney  
Cirello and Vessicchio, LLC

*Tynetta Darden, CDF, MPA*  
Training Officer  
CT Department of Higher Education

*Kathy DeStefano*  
First Grade Teacher  
West Haven Public Schools

*Robert Osborne*  
Educator  
New Haven Public Schools

*Michelle Rivelli, MD, FAAP*  
Pediatrician  
Pedicare Associates

*Lois Rho*  
Educational Consultant  
Area Cooperative Educational Services

*Richard Ruiter*  
School administrator, retired  
Farmington Public Schools (Michigan)

*Carole Weisberg*  
Coordinator, Early Childhood & Youth Education  
Program, Charter Oak State College

*Marcy Guddemi, PhD, MBA (ex-officio)*  
Executive Director  
Gesell Institute

---

---

## Our History

The Institute’s namesake, Arnold Gesell, PhD, MD, began his ground-breaking work early in the 20th century. He developed a set of norms illustrating sequential and predictable patterns of growth and development, used as the basis of the Gesell Developmental Observation.

Dr. Gesell was the first director of the Yale University clinic now known as the Yale Child Study Center, as well as the nation’s first school psychologist. He was also a founding member of the National Association for Nursery Education, now known as the National Association for the Education of Young Children (NAEYC).

Following Dr. Gesell’s retirement from Yale in 1950, his colleagues opened the Gesell Institute to continue his life’s work. Since that time, the Institute has offered a variety of medical and educational programs and services to promote the healthy development of children and adults worldwide.



Today, the work of the Institute is focused on educating and supporting teachers and parents in order to ensure the future success of all children, in the United States and abroad.

*Please visit our web site at [www.gesellinstitute.org](http://www.gesellinstitute.org) for more information, to contact us, or to order our materials.*

---